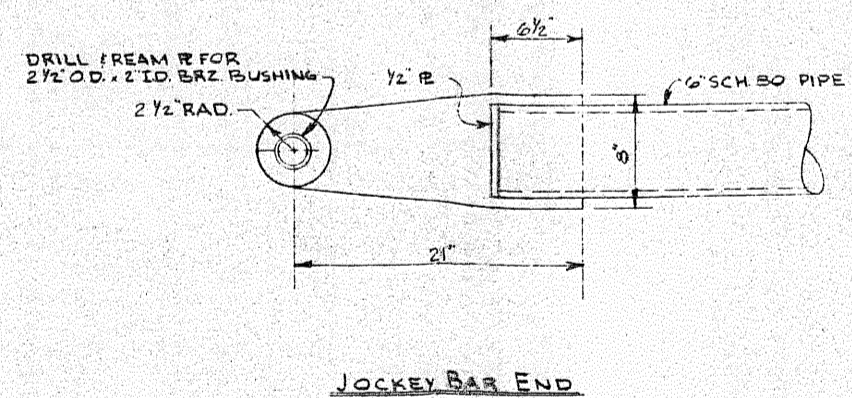
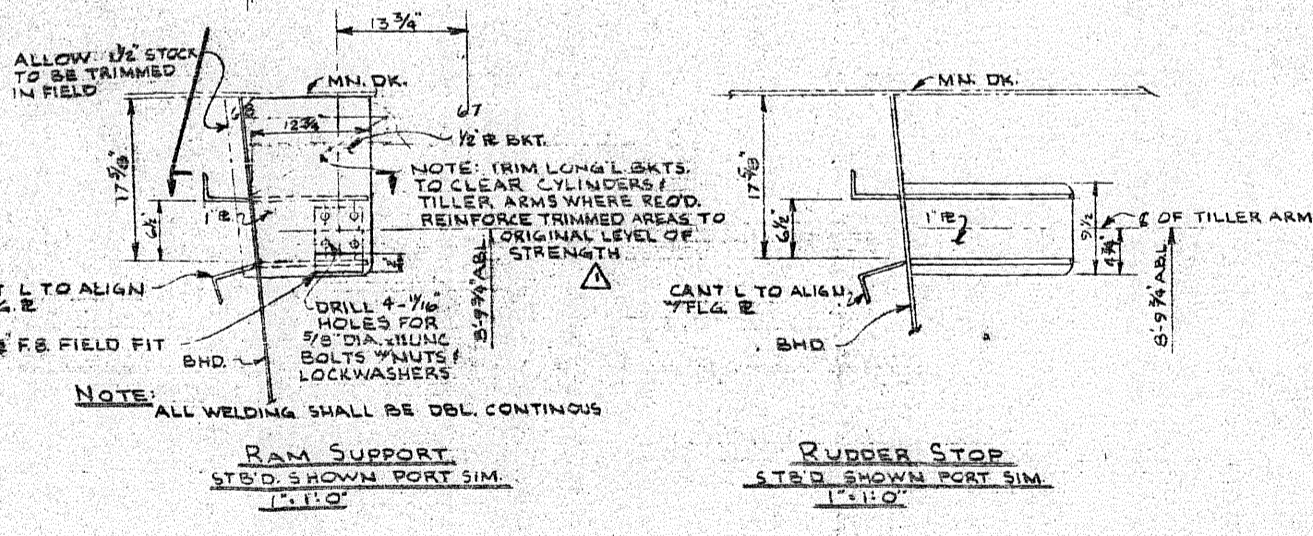
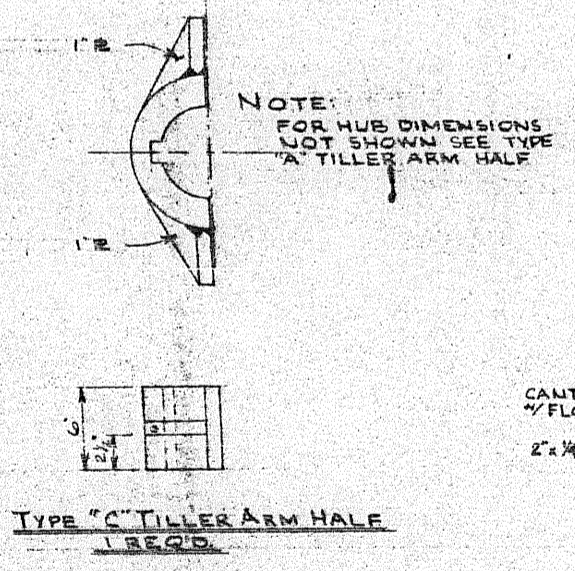
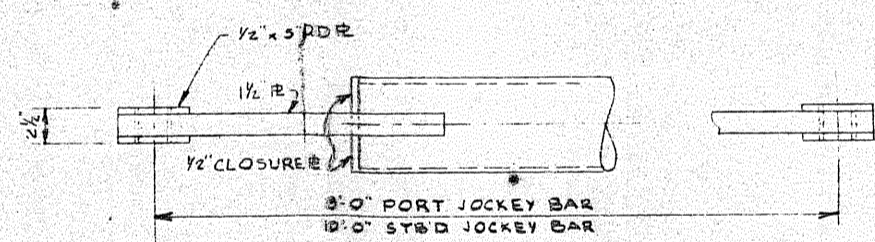
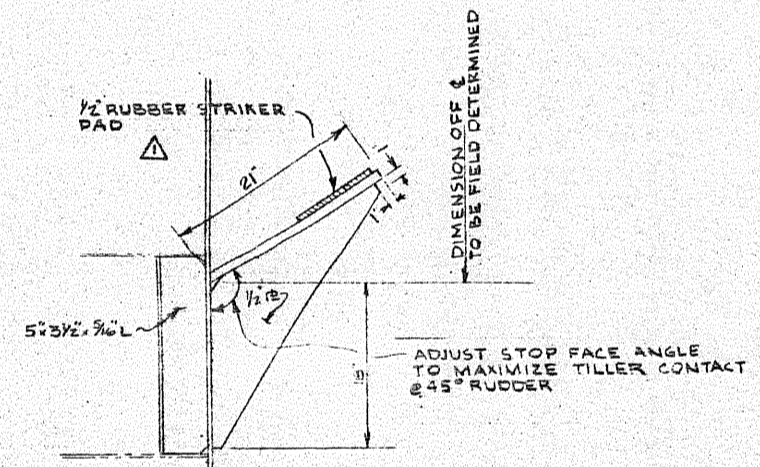
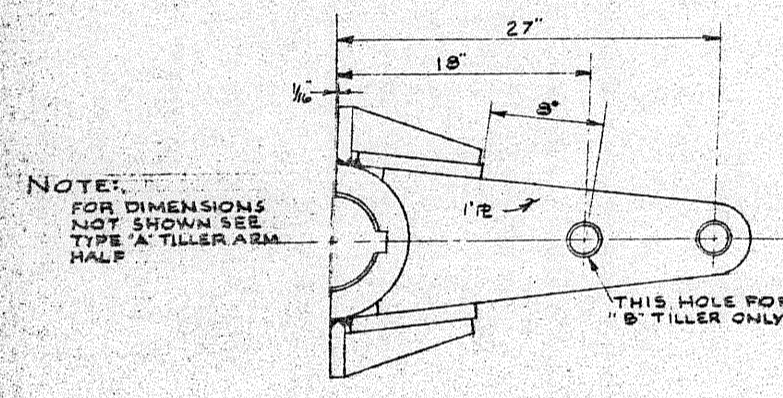
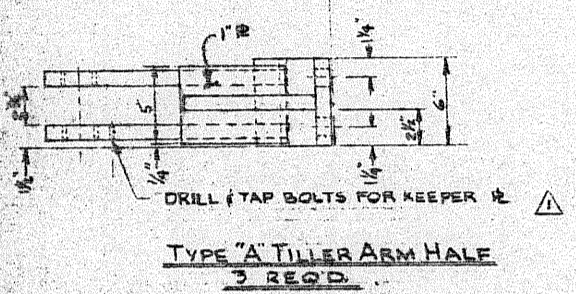
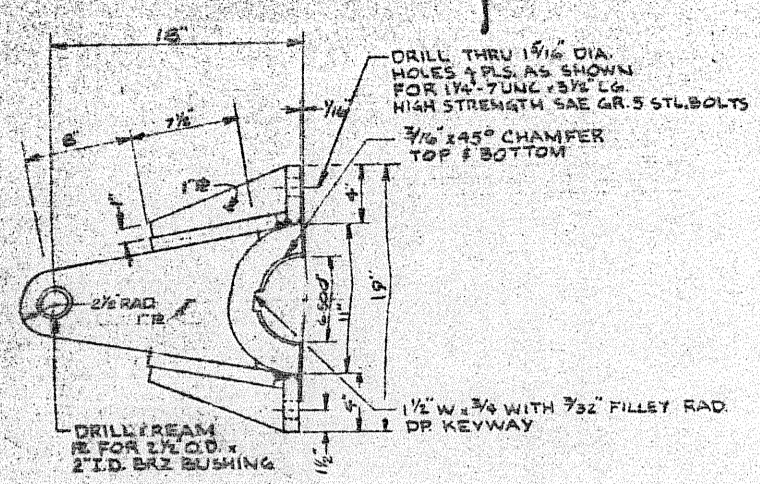


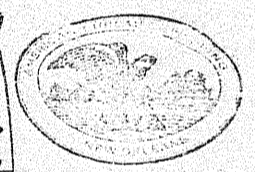
REV. NO.	DESCRIPTION	BY	DATE	APPROV.
1	REVISED PER TIDEWATER COMMENTS REV. '0'	BJ	4/21/81	AL



NEW YORK

FILE COPY
5 RECEIVED
FILE NEW YORK
FILE NEW ORLEANS
FILE NEW ORLEANS
USG S
INITIALS

APPROVED
31 AUG 1981
[Signature]



MISS. MARINE TOWBOAT CO. HULL # 90

DESIGN ASSOCIATES, INC.
NAVAL ARCHITECTS NEW ORLEANS, LA. MARINE ENGINEERS

TIDEWATER MARINE SERVICE

143' x 36' x 10' SEISMIC VESSEL

RUDDER ARRANGEMENT
I DETAILS

Drawn: [Signature]	Date:	Checked:
Traced:	Date:	Checked:
App'd:	Date:	Scale: 1/4" = 1'-0"

Sheet 2 OF 2 | Drawing No. C-2062-11 | Revision Mark